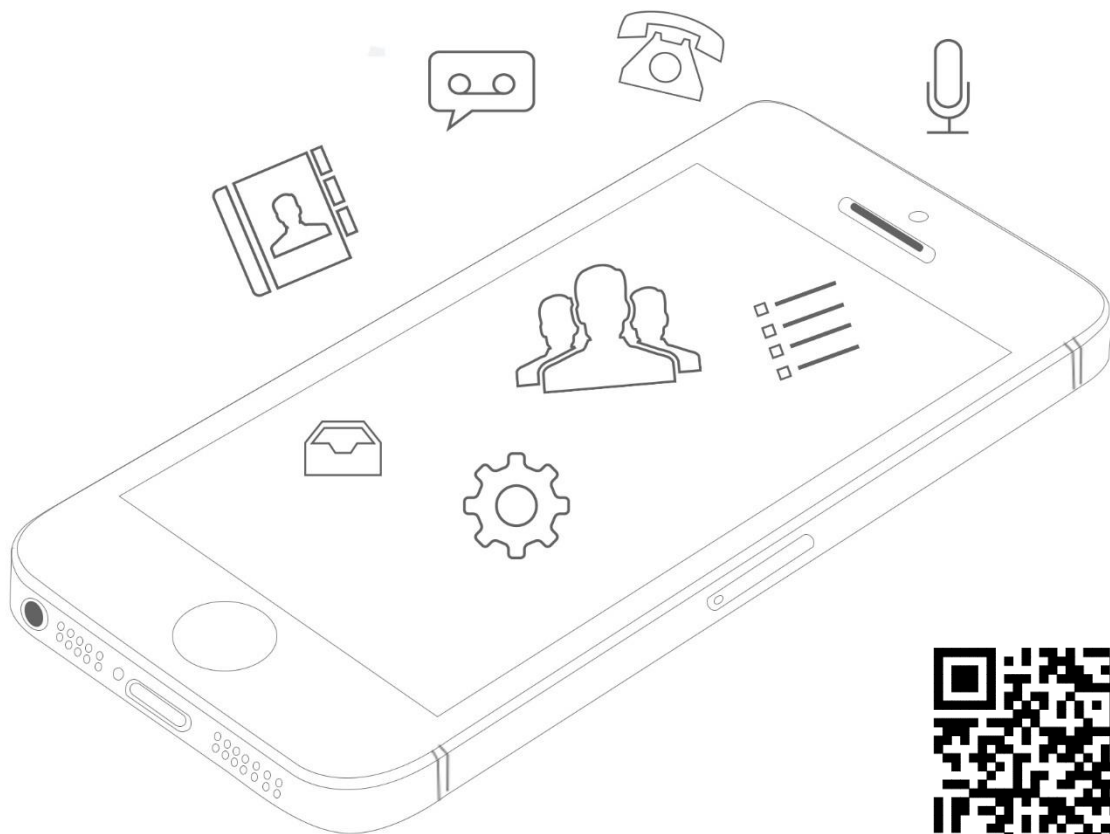




Linkus User Guide

iPhone Edition 1.0.24



Revised: November 22, 2016

CONTENTS

INTRODUCTION.....	3
INSTALLING LINKUS	4
Installing Linkus on Yeastar S-Series PBX.....	4
Installing Linkus on iPhone	5
GETTING STARTED	6
Network Settings.....	6
NAT Settings and Port Forwarding.....	6
Logging in Linkus	7
Personal Information	9
CALLING WITH LINKUS	10
Interaction between Linkus & Native Phone.....	10
Making a Call from Extension List	11
Making a Call from Contacts.....	13
Making a Call from the Dial Pad/Call History	14
Handling an Established Call	15
Call Transfer	15
Number Rewriting	17
CONTACTS.....	20
Extensions.....	20
Contacts.....	21
CALL HISTORY	22
Creating a Contact from History	23
SETTINGS	24

INTRODUCTION

Linkus is a VoIP Mobile Client coordinated with Yeastar S-Series VoIP PBX. The Linkus iPhone Edition is for Apple iPhone.

Linkus makes your mobile phone an office extension and links you and your colleagues and customers anywhere anytime. Make and receive calls through corporate phone network to slash call costs and enhance efficiency with consistent in-office experience.

Standard Telephone Features

- Call Display
- Speakerphone and Mute
- Hold & Resume
- Call Waiting
- Do Not Disturb
- Call History
- Access to S-Series Directory
- Native Contacts Integration
- Contact Avatars
- Audio Call Conference

Specifications

- iPhone Requirement: iOS 8.0 or later
- Supports CallKit feature on iOS 10
- PBX Requirement: Yeastar S-Series PBX firmware version 30.2.0.27 or later
- Network: 2G/3G/4G or Wi-Fi
- Protocol: SIP RFC3261
- Codec: iLBC
- Network Protocol: TCP/IP/UDP, RTP/SRTP/RTCP, HTTP/HTTPS
- DTMF: Inband, RFC4733 (RFC2833), Info

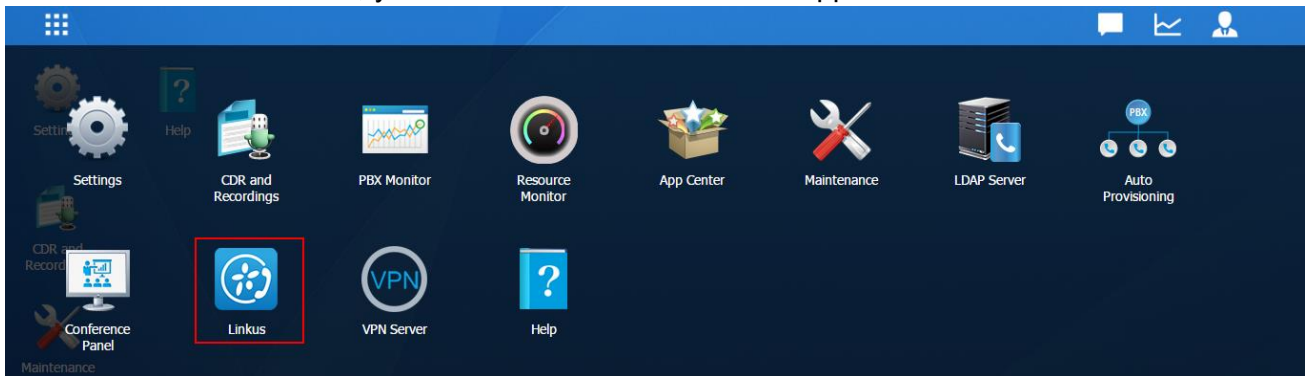
INSTALLING LINKUS

Installing Linkus on Yeastar S-Series PBX

Linkus is supported on Yeastar S-Series PBX firmware version 30.2.0.27 or later. Please upgrade the PBX firmware before using Linkus.

STEP 1. Log in S-Series PBX web user interface, go to App Center and install Linkus.

STEP 2. Click “Main Menu”, you can see the installed Linkus App.



STEP 3. Click “Linkus” icon to configure it.

STEP 4. Check “Enable” box to enable Linkus feature on the PBX.



STEP 5. Select extensions, and click “Enable”. The extension users would be allowed to log in Linkus on their phones.

<input checked="" type="button" value="Enable"/> <input type="button" value="Disable"/> <input type="button" value="Port Settings"/>			
<input checked="" type="checkbox"/>	Extension	Name	Enable Linkus Client For Users
<input checked="" type="checkbox"/>	5001	5001	<input type="checkbox"/>
<input checked="" type="checkbox"/>	5003	Jessica	<input type="checkbox"/>
<input checked="" type="checkbox"/>	5004	5004	<input type="checkbox"/>
<input checked="" type="checkbox"/>	5005	5005	<input type="checkbox"/>
<input checked="" type="checkbox"/>	5006	5006	<input type="checkbox"/>
<input checked="" type="checkbox"/>	5007	Michael	<input type="checkbox"/>
<input checked="" type="checkbox"/>	5008	郑渊瑞	<input type="checkbox"/>
<input checked="" type="checkbox"/>	6001	6001	<input type="checkbox"/>
<input checked="" type="checkbox"/>	6002	沈伟宏	<input type="checkbox"/>
<input checked="" type="checkbox"/>	6003	陈鹏志	<input type="checkbox"/>

STEP 6. Click “Port Settings”, configure the Linkus service port.

Port Settings ✕

Linkus Service Port ⓘ:

- **Linkus Service Port:** port for Linkus service. The default port is 8111.

STEP 7. Click “Save” and “Apply”

Installing Linkus on iPhone

The Linkus App must run on iPhone iOS 8.0 or later. Users could download the application from QR code scan or search “Yeastar” in the Apple Store to download the application.



Scan and Download
from App Store

GETTING STARTED

Network Settings

Before using Linkus, please make sure that the network settings on your iPhone are configured correctly. You can choose Wi-Fi network or cellular data for your iPhone. Enabling both Wi-Fi and cellular data is a better choice that Linkus will keep working through the cellular data if you are not in the Wi-Fi zone.

Note:

- We strongly recommend that you perform your initial setup from within a “known” network, such as in your company or in your home, but not in a public network such as an internet café.

NAT Settings and Port Forwarding

The S-Series PBX’s administrator need to configure NAT settings and forward the Linkus corresponding ports to ensure that Linkus could work properly when Linkus is running out of the local network.

The following ports should be forwarded:

Port	Default Value	Configuration Path
Linkus Service Port	8111	S-Series > Linkus > Port Settings
SIP UDP Port	5060	S-Series > Settings > PBX > General > SIP
SIP RTP Ports	10000-12000	S-Series > Settings > PBX > General > SIP

Go to **S-Series > Settings > PBX > General > SIP > NAT** to configure NAT settings.

- Choose a NAT Type.
- Enter the external IP address or domain, and enter the forwarded SIP UDP port.
- Enter local network identification.
- Set NAT Mode to “Yes”.
- Click “Save” and “Apply”.


NAT Type ⓘ: External IP Address ▼

External IP Address ⓘ: : 5060


Local Network Identification ⓘ: / +



NAT Mode ⓘ: Yes ▼

Logging in Linkus

Once the Linkus has been downloaded and installed on your iPhone, you can see the icon  on your iPhone. Tap the icon to launch Linkus. Please get the login information from the S-Series PBX administrator. The following information should be provided:

- **S-Series PBX IP Address (Local IP or Public IP)**

 When the phone is connected to the Wi-Fi network from the same router of S-Series PBX, the Linkus local IP address will work;

  When the phone is connected to a different Wi-Fi network from S-Series PBX or connected to the mobile data, the Linkus public IP address will work.

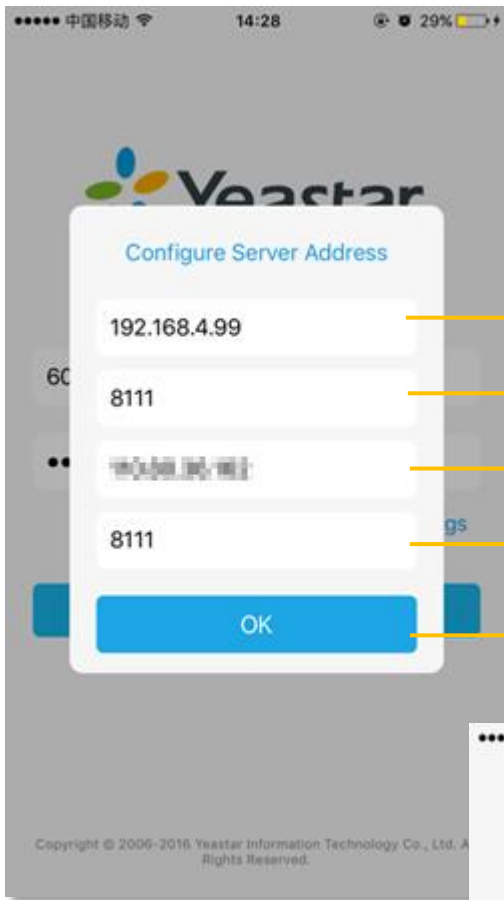
- **Linkus Service Port**

- **Extension Number**

- **Extension User Password**

Note:

- For the first-time login, please allow Linkus to send notifications when the application is in the background.
- For the first-time login, you need to confirm whether allow Linkus to access Contacts from your phone. If you allow this action, Linkus will continually synchronized with your native contacts.



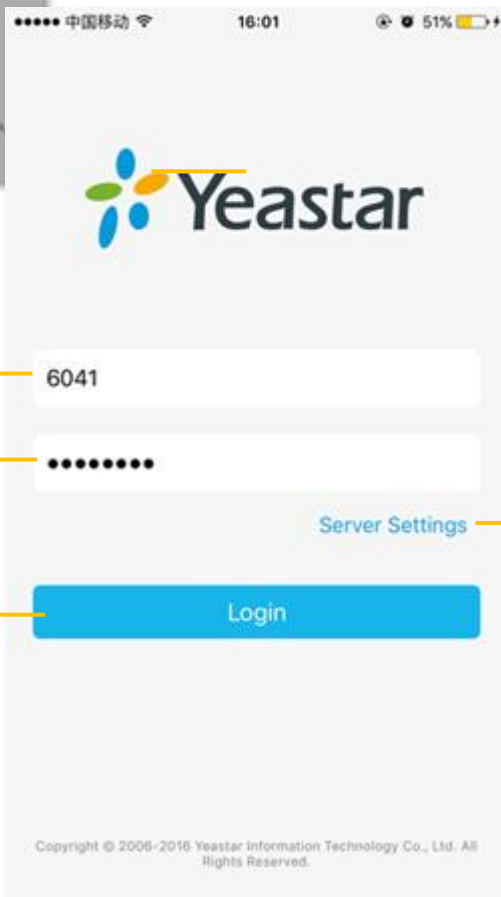
1. Enter the local hostname/IP of Yeastar S-Series PBX.

2. Enter Linkus service local port.

3. Enter the external hostname/IP of Yeastar S-Series PBX.

4. Enter Linkus service external port.

5. Tap OK.




6. Enter extension number.

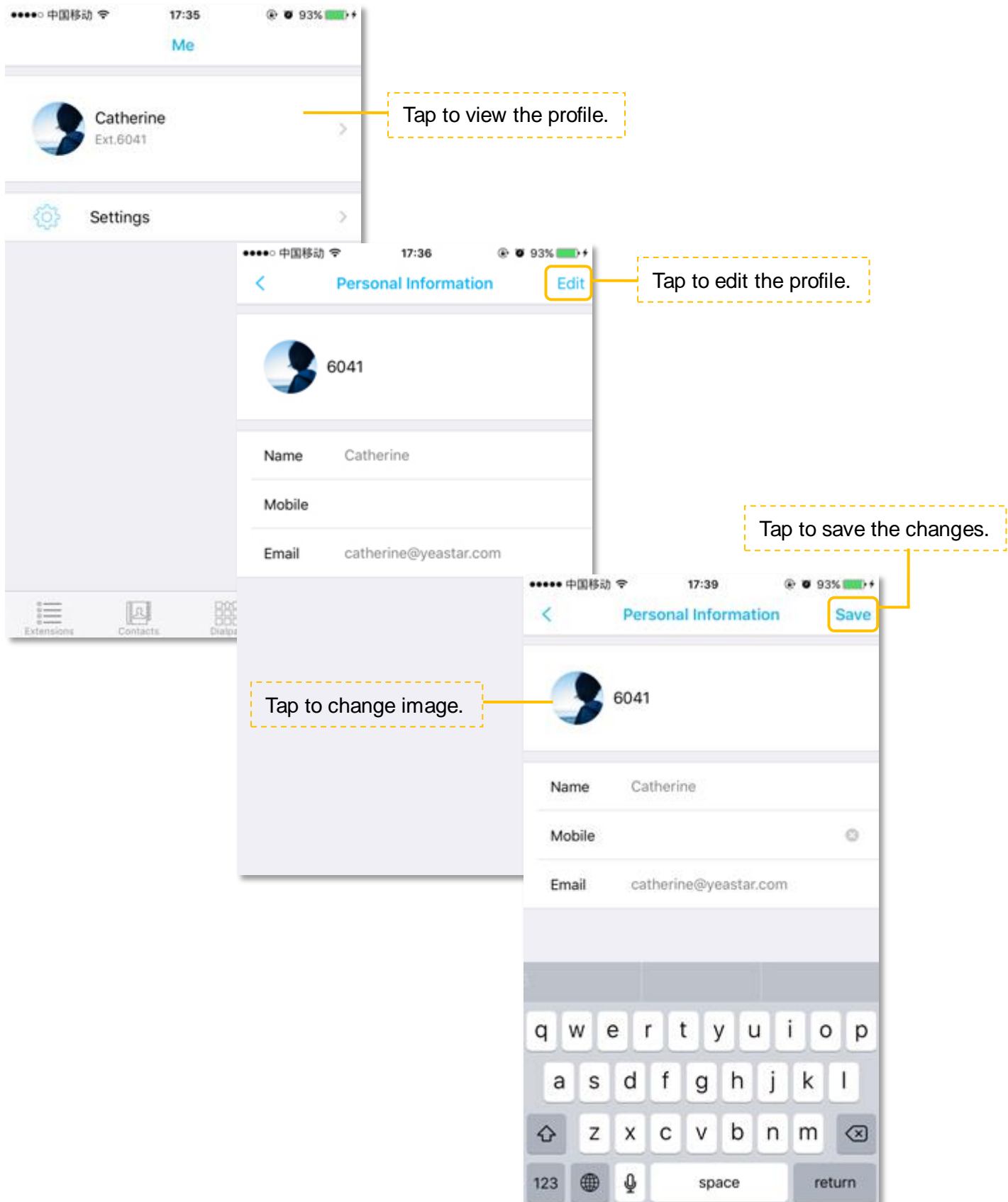
7. Enter extension user password.

Tap to change server settings.

8. Tap Login

Personal Information

After login, you can edit your profile by tapping  on the bottom of the screen.



CALLING WITH LINKUS

Interaction between Linkus & Native Phone

Outgoing Calls

- You can make a native call regardless of the state of Linkus.
- Calls from Linkus can be made if not on a native call.

Incoming Calls

- An incoming call to your extension will ring Linkus if you are not on a native call.

Established Calls

- If you accept an incoming native call, you could not handle the call by Linkus.
- If you make a call from Linkus, you can record the call or transfer the call on Linkus.

CallKit Integration (for iOS 10)

- Prior to CallKit, incoming calls on Linkus come through only as simple banner notifications. But now, with CallKit, incoming Linkus calls will show up just like regular calls.

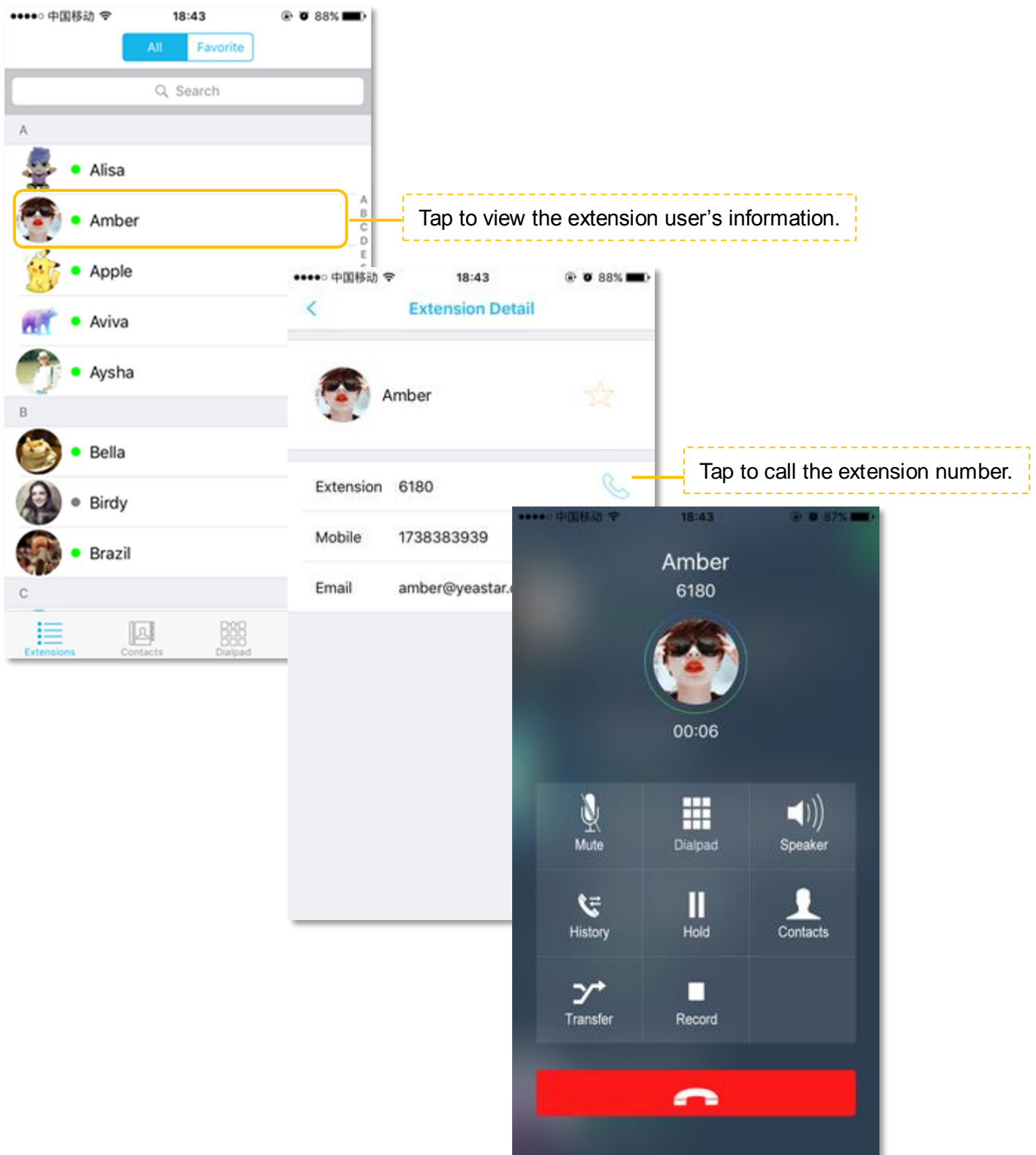


Making a Call from Extension List

Access S-Series PBX extension list by tapping  at the bottom of the screen.

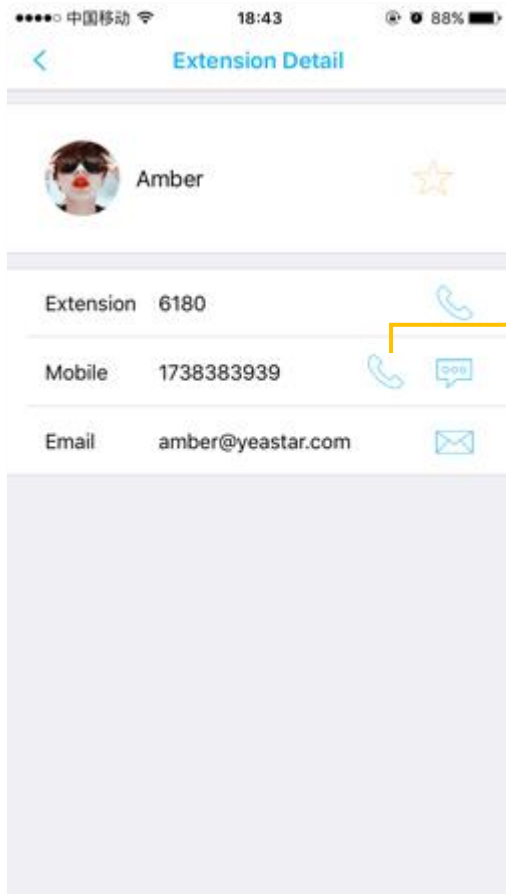
➤ Call Extension Number

Choose the extension number and tap  to call the extension number directly.




➤ Call Mobile Number

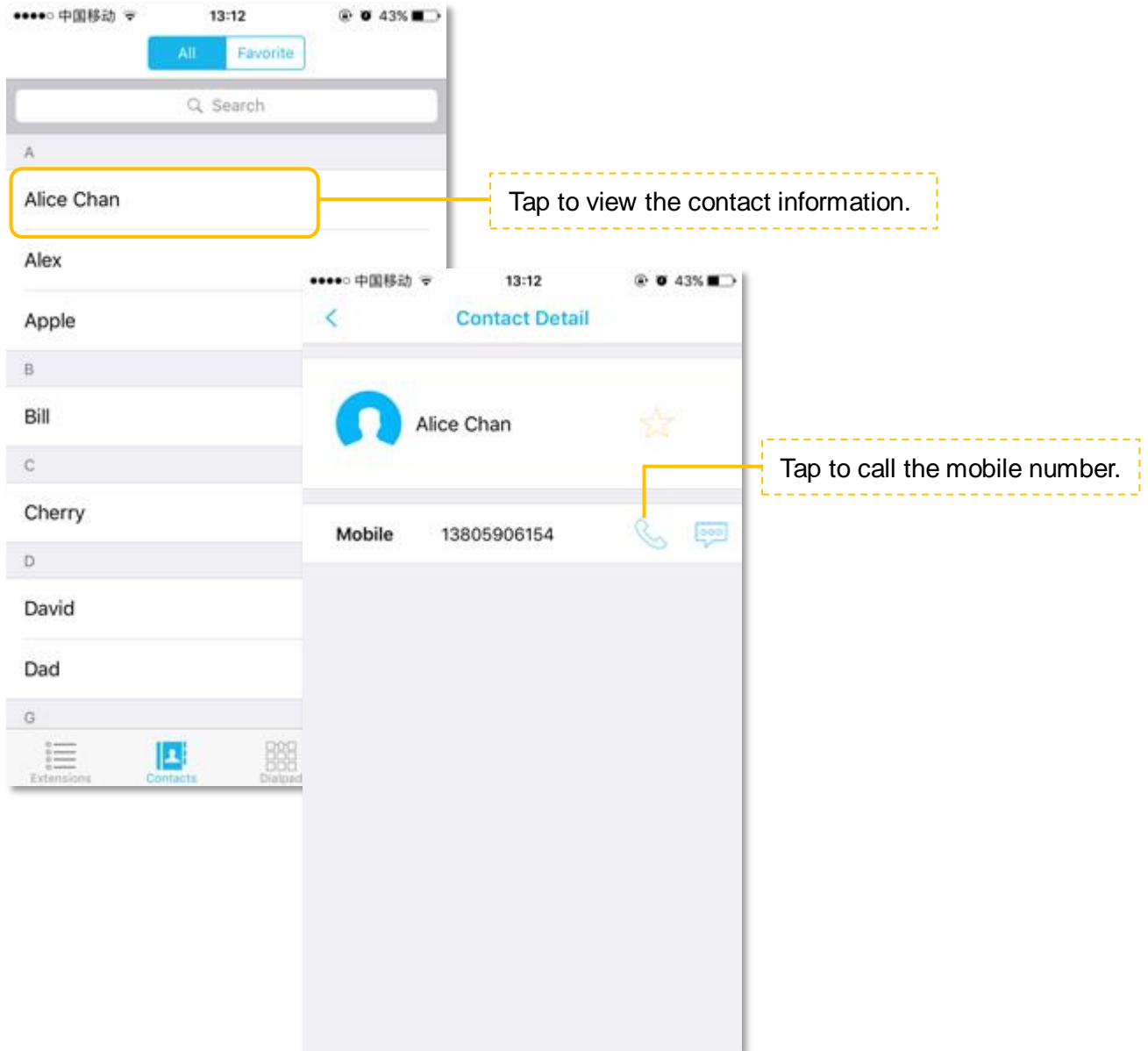
Users can also call a person's mobile phone on Linkus, the bill is charged to S-Series PBX. The number you want to call should match outbound routes in S-Series PBX, or the call will fail.






Tap to call the mobile number.

Making a Call from Contacts

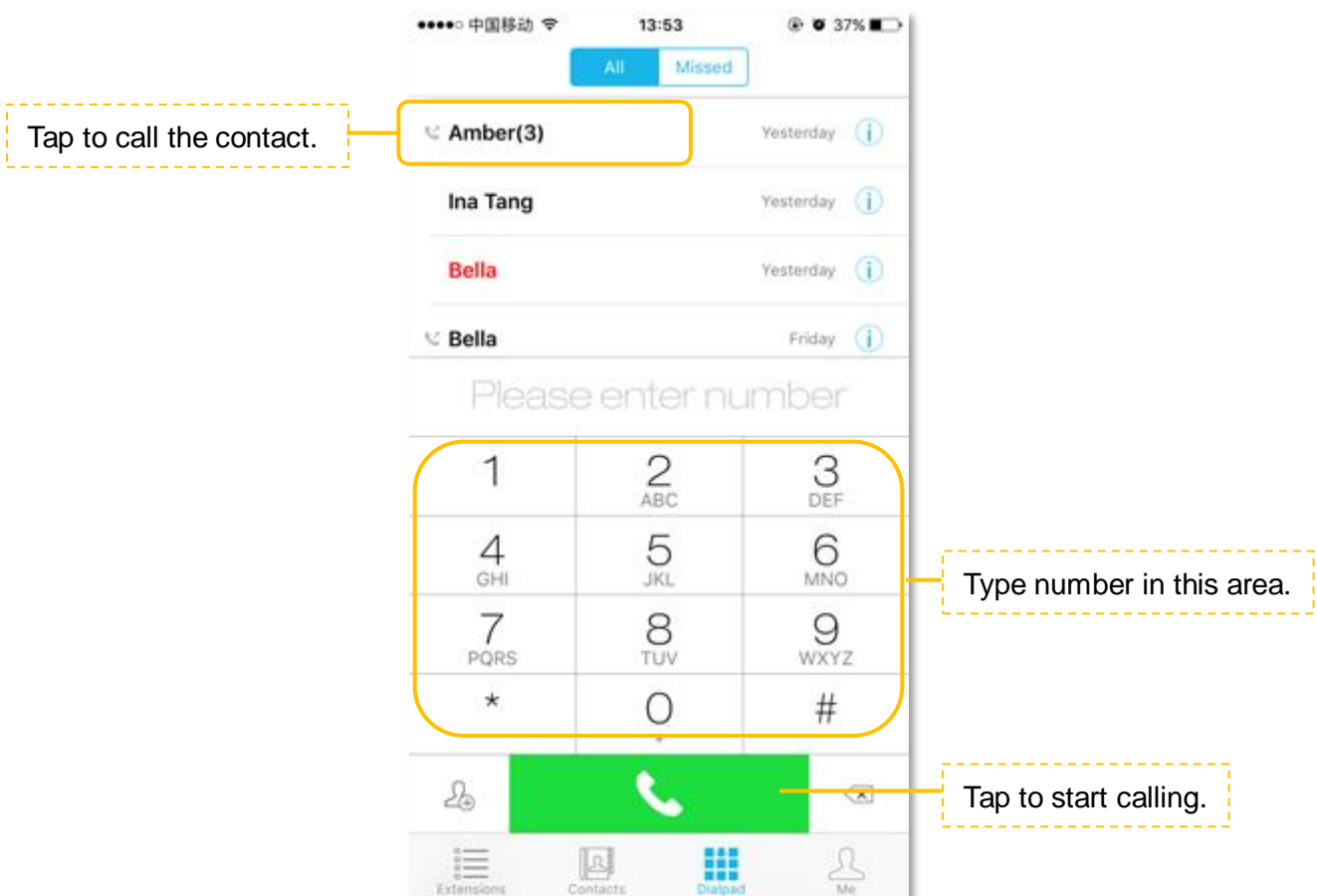
Access Linkus **Contacts** by tapping  at the bottom of the screen. The contacts are continually synchronized with your native contacts.



Making a Call from the Dial Pad/Call History

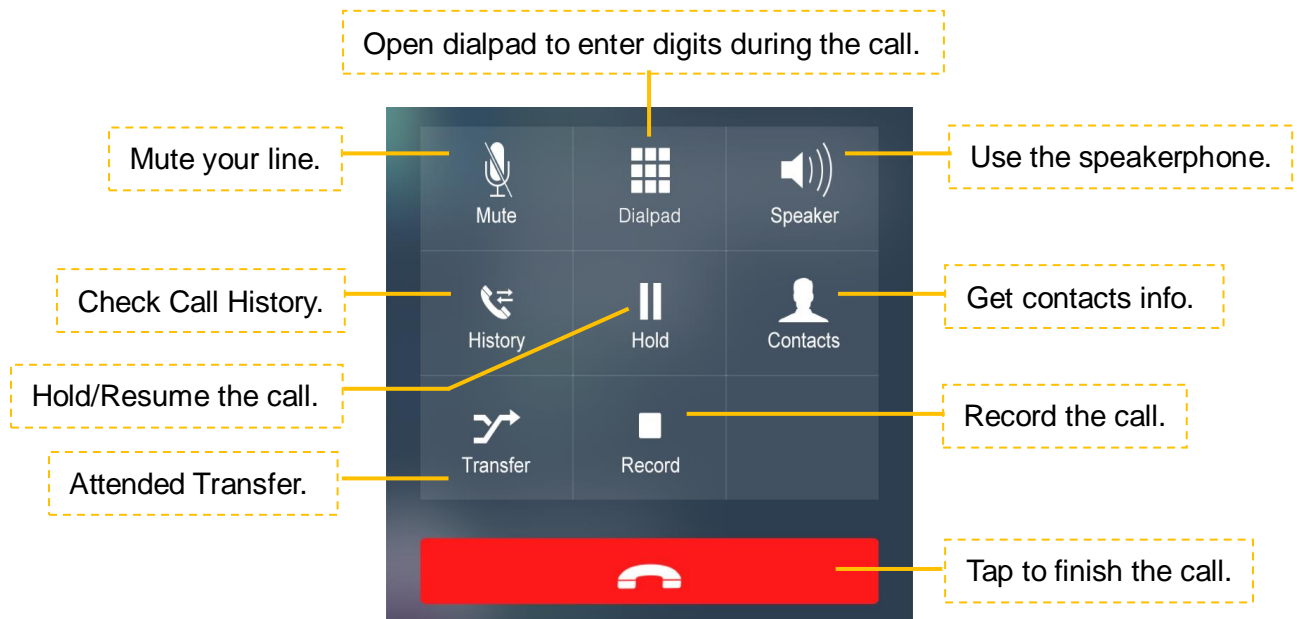
Tap  at the bottom of the screen, a dial pad shows up and displays all the call history and missed calls. Tap  to hide the dial pad, then you can check all the call history. Tap  to show the dial pad.

Enter a number on the dial pad and tap  to call or you can call from the history.




Handling an Established Call




When you are on a call, the screen shows several call options.

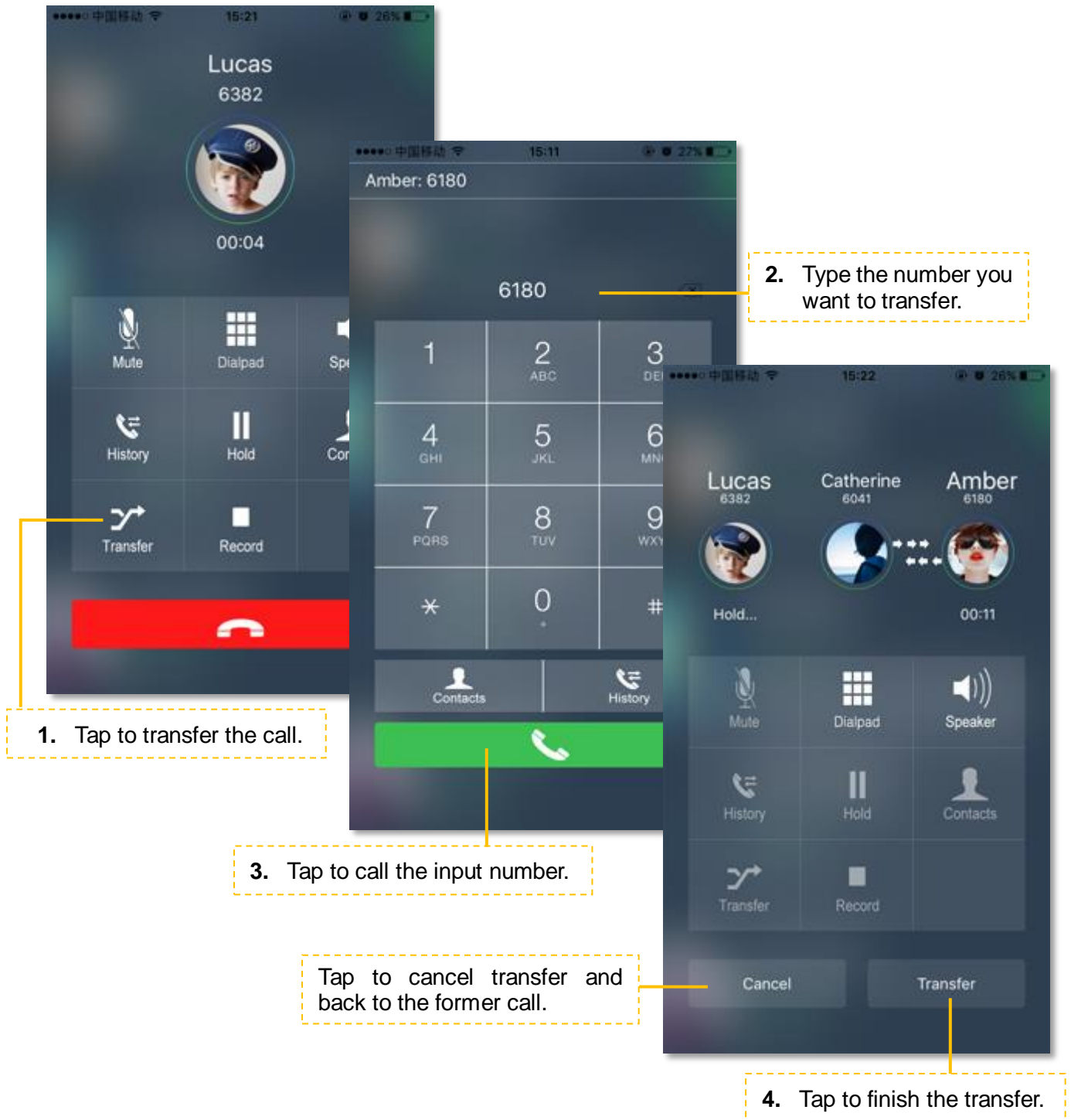


Call Transfer

Tap  during the call, you can make an attended transfer, then dials a number and talks to the person who has picked up the call before transferring the caller over to him/her.

User A and User B are on the phone, User B on Linkus wants to transfer the call the User C.

1. Tap , the screen will be switched to the Transfer Screen.
2. Input User C's number on the screen then tap  to call User C.
3. User B talks to User C, the call between A and B is put on hold.
4. User B taps  to finish the call between B and C.
5. The call between A and C is established once B ends the call.



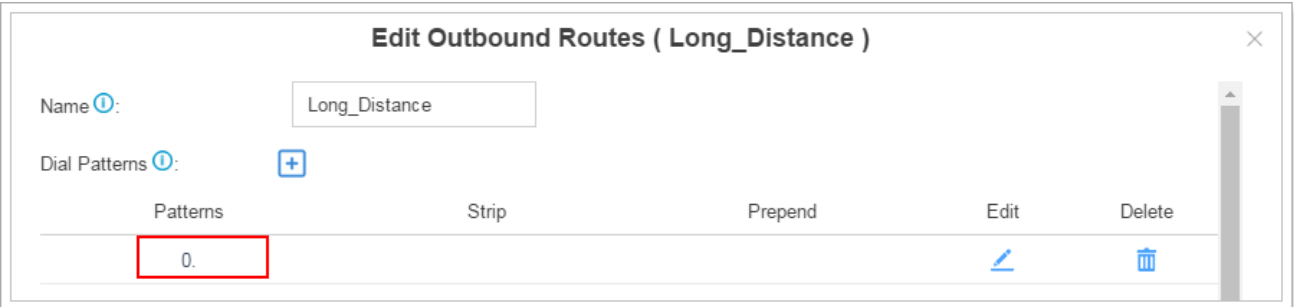
Number Rewriting

Number rewriting is a feature that allows you to manipulate the numbers dialed from Linkus. With number rewriting feature, you can utilize your native contacts or call history numbers without having to add new entries.

We have an example to show you how to use number rewriting feature. You could check the steps below.

Step 1. Create an outbound route for adding prefix digits propose.



For example, we need to add digit 0 before the long-distance mobile phone numbers; so we need to create an outbound route and set the patterns as “0.” (do not forget the dot).



Edit Outbound Routes (Long_Distance)

Name ⓘ: Long_Distance


Dial Patterns ⓘ: +

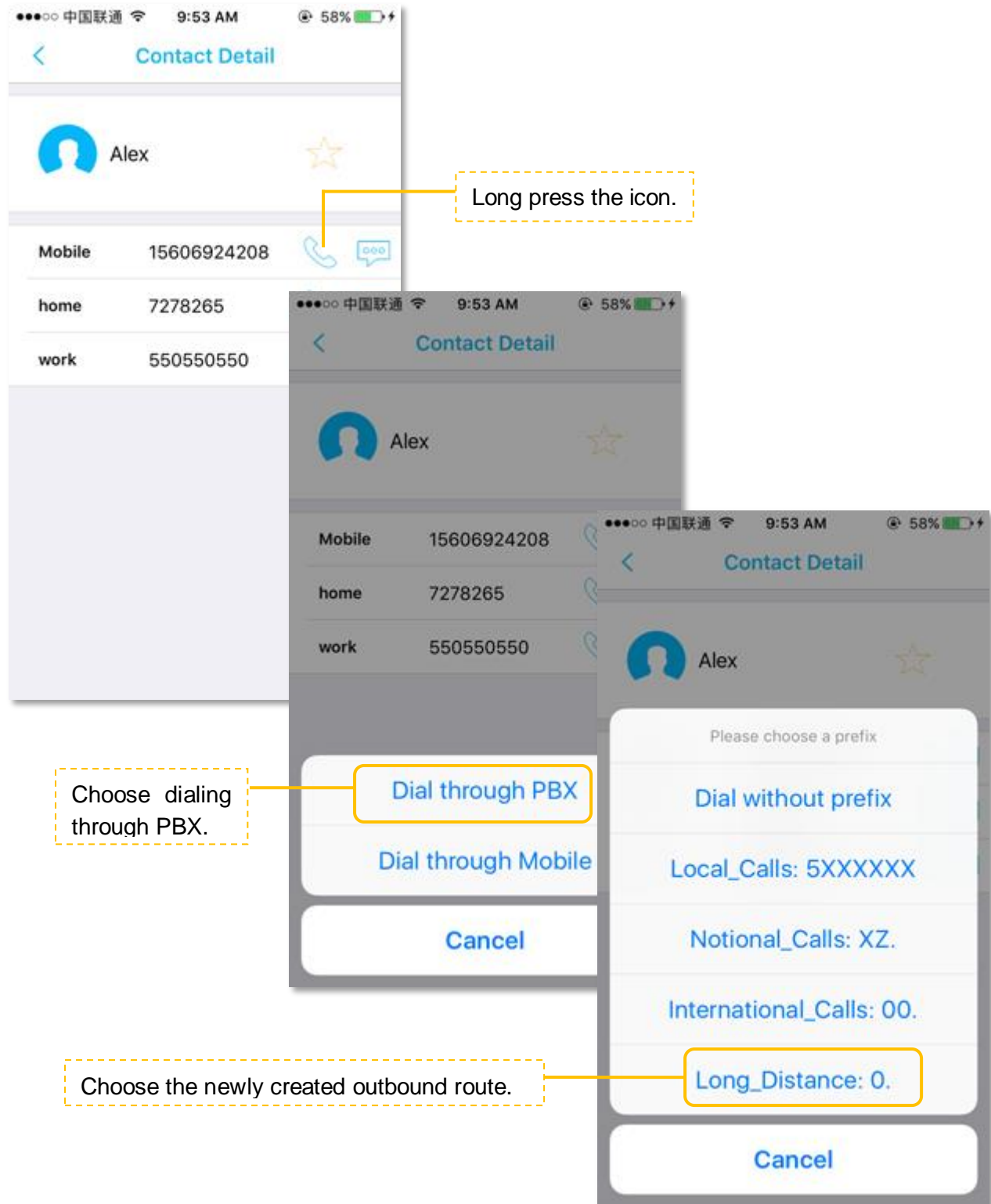
Patterns	Strip	Prepend	Edit	Delete
0.				

Step 2. Choose the outbound route on Linkus to call out.

The system will automatically add prefix 0 and match an available outbound route to call out.

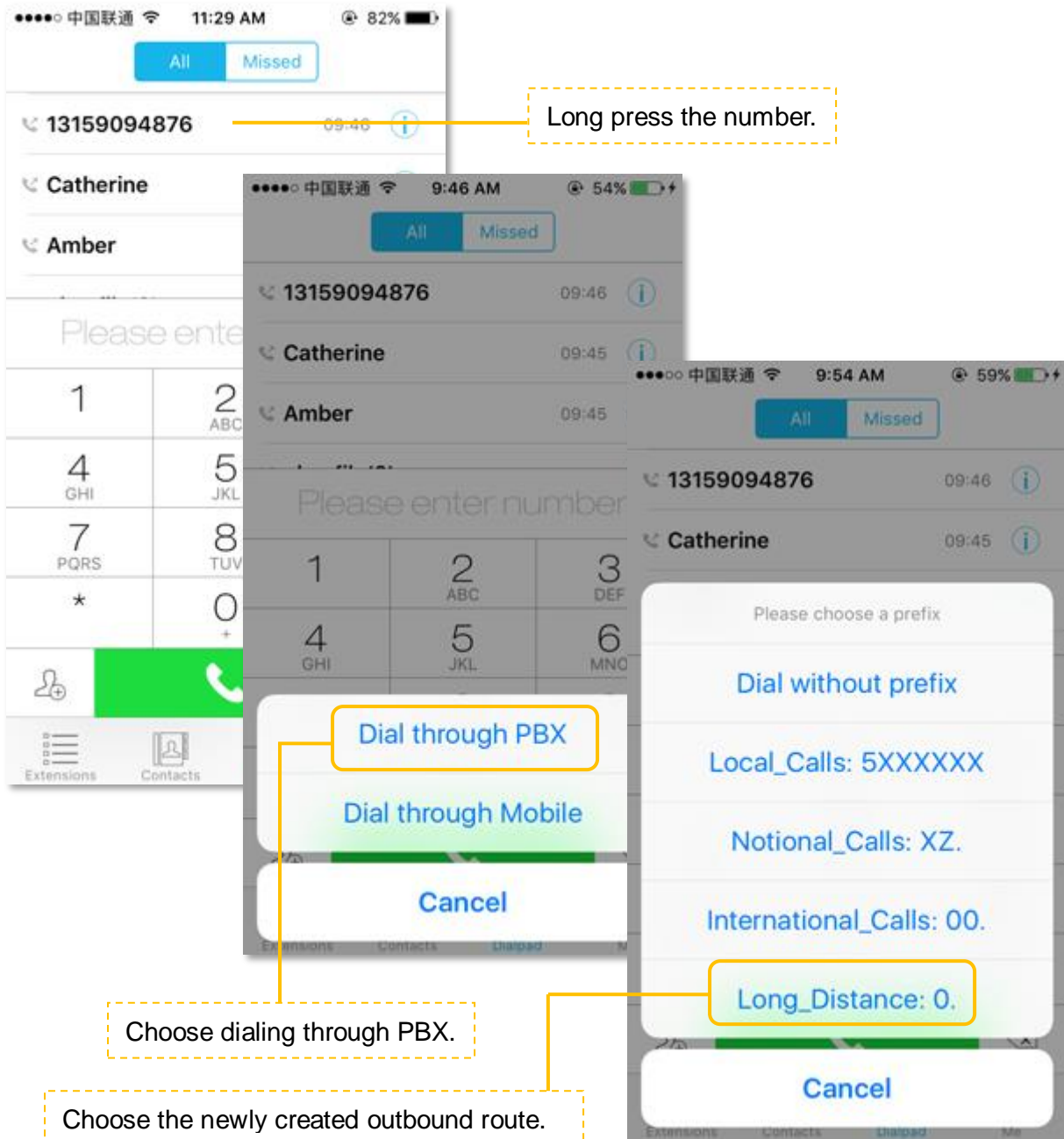
◆ Call From Contact Numbers

Long press the icon , choose calling through PBX, and choose the outbound route we created in step 1, the system will add prefix 0 automatically and call out.



◆ **Call From Call History Numbers**

Long press the number, choose dialing through PBX, and choose the outbound route we created in step 1, the system will add prefix 0 automatically and call out.

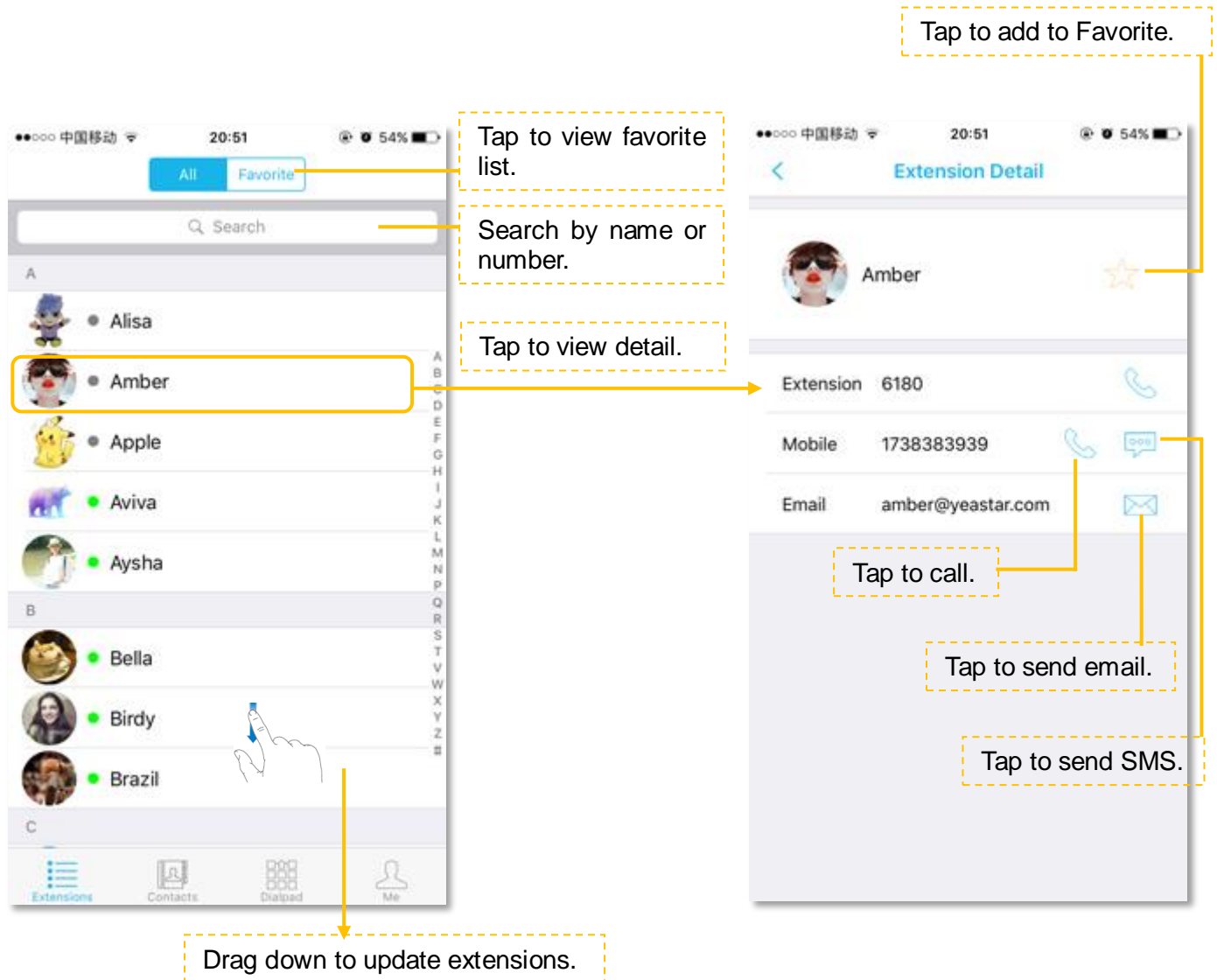


CONTACTS

Linkus provides two phonebooks, **Extensions** and **Contacts**.

- **Extensions:** all the S-Series extensions are displayed on the Extensions page.
- **Contacts:** Contacts on Linkus are continually synchronized with your native contacts.

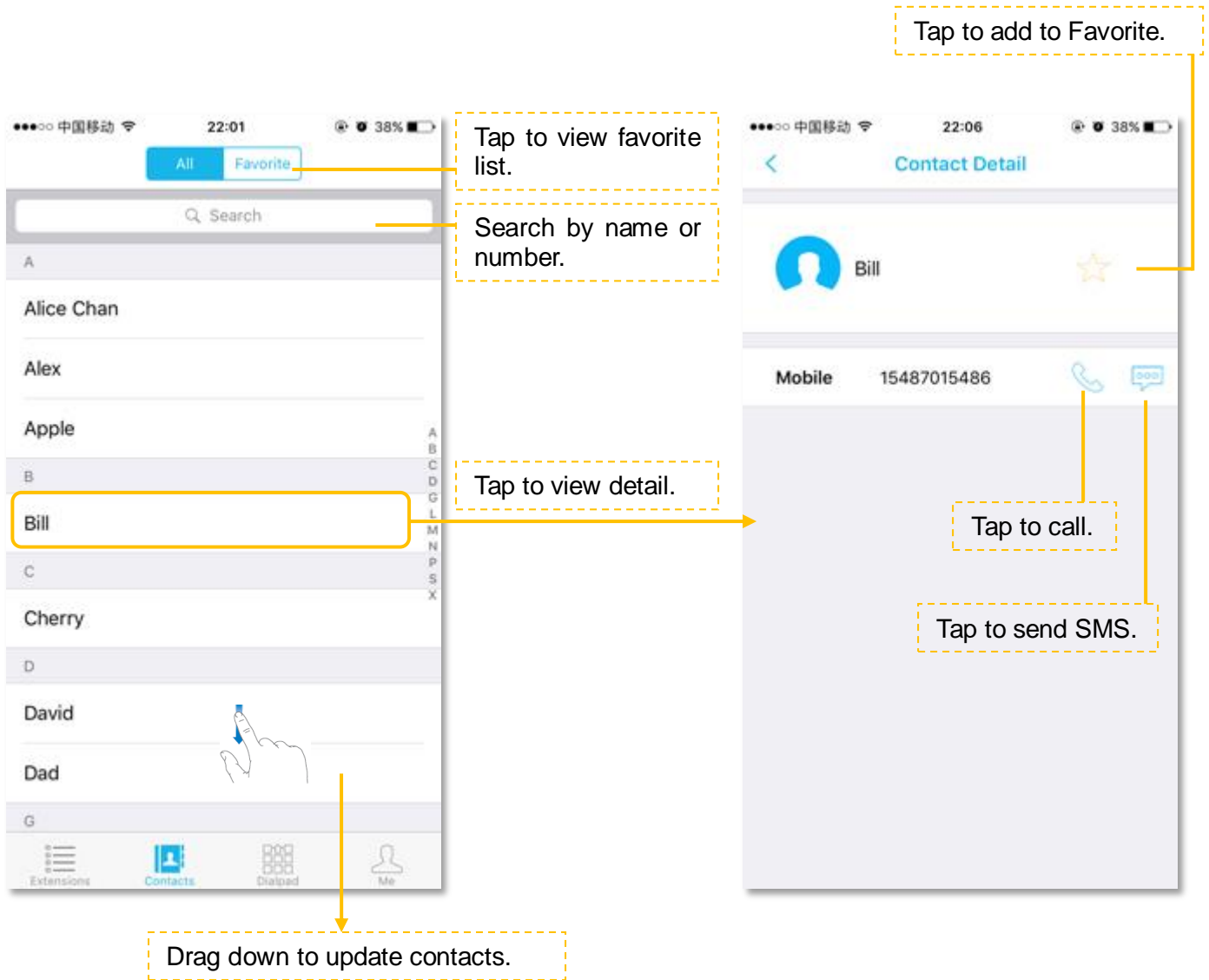
Extensions





Extension Status

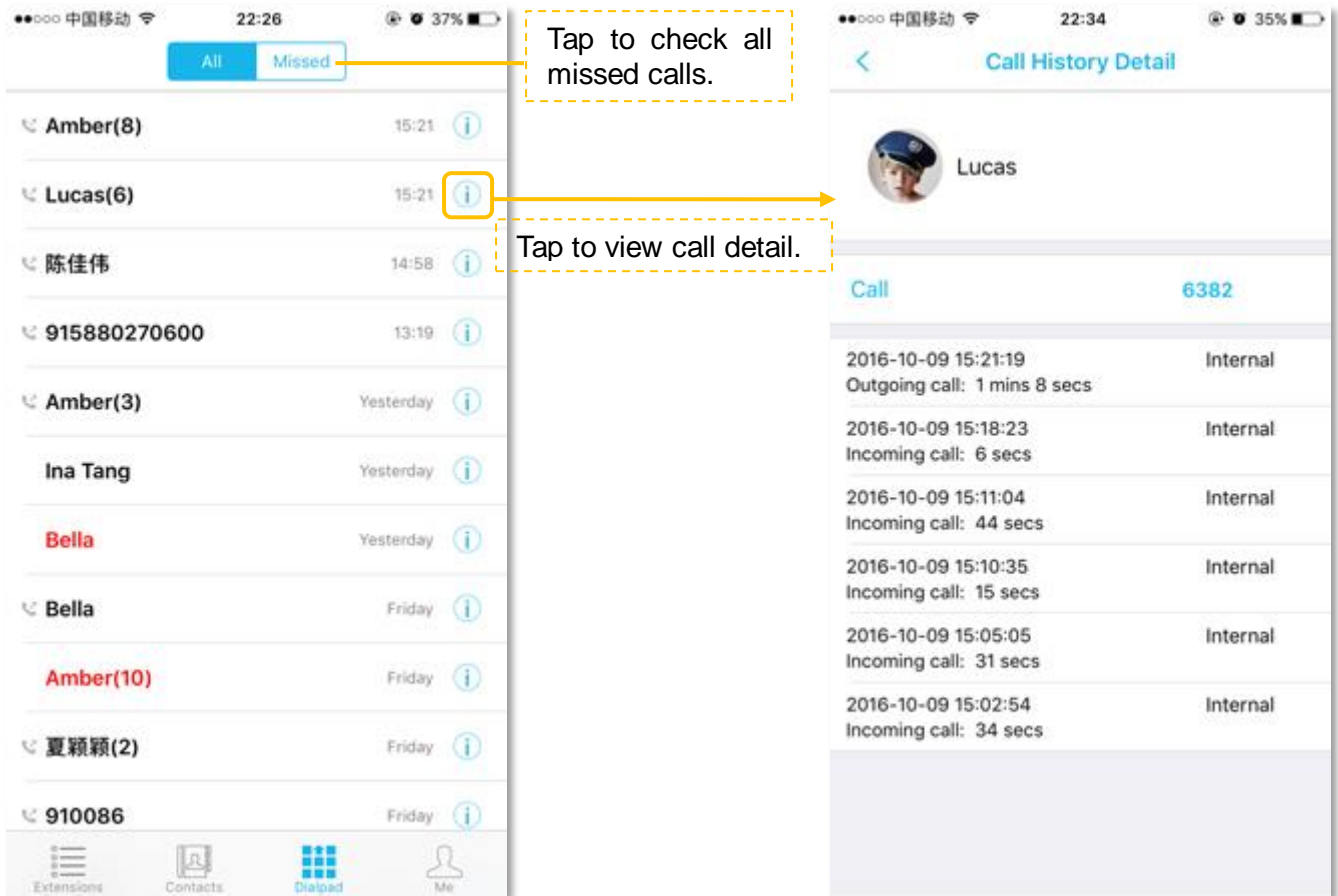
- The extension is registered.
- The extension is busy in a call.
- The extension is unavailable.

Contacts



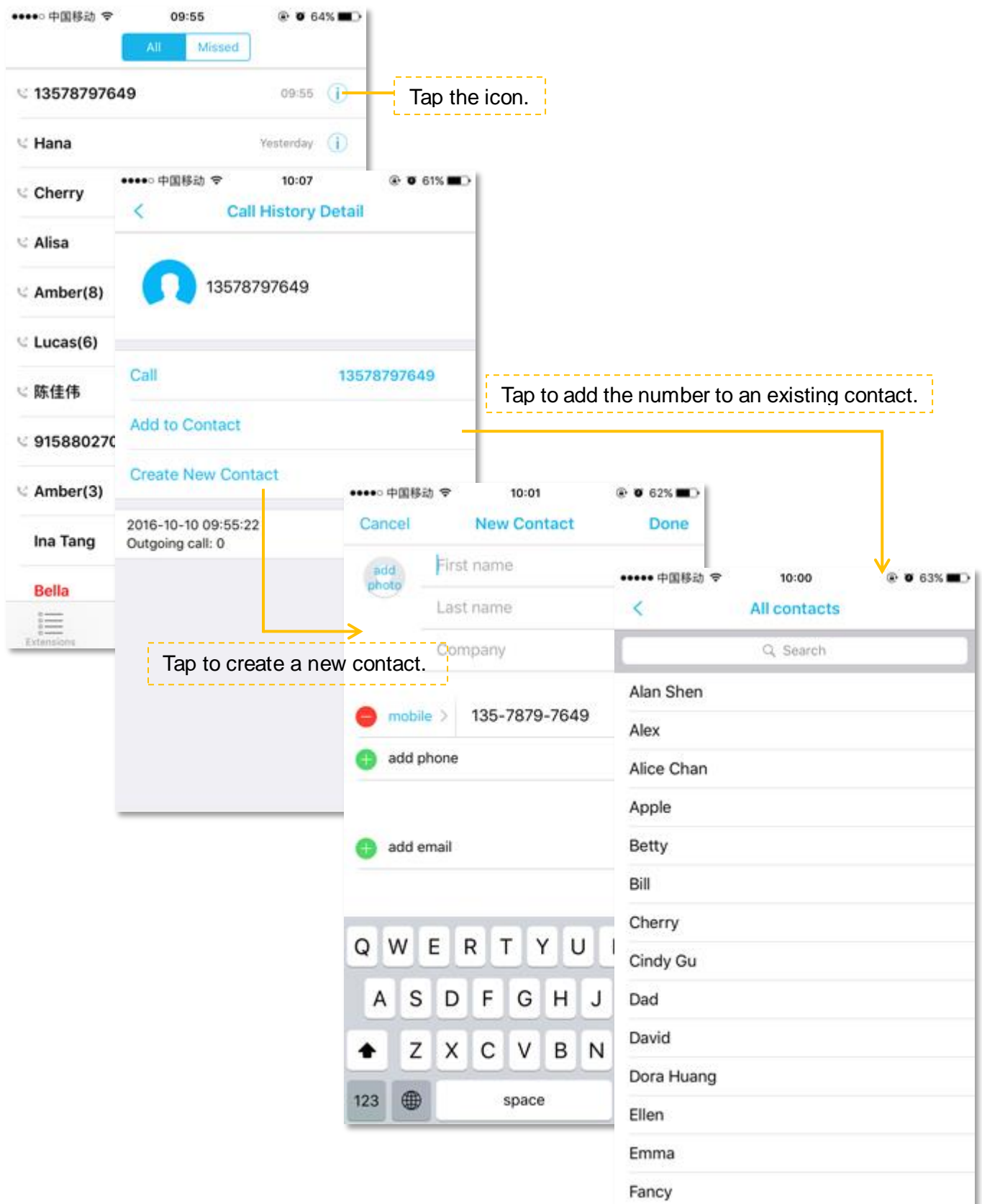
CALL HISTORY

Tap  at the bottom of the screen, a dial pad shows up and displays all the call history and missed calls. Tap  to hide the dial pad, then you can check all the call history.




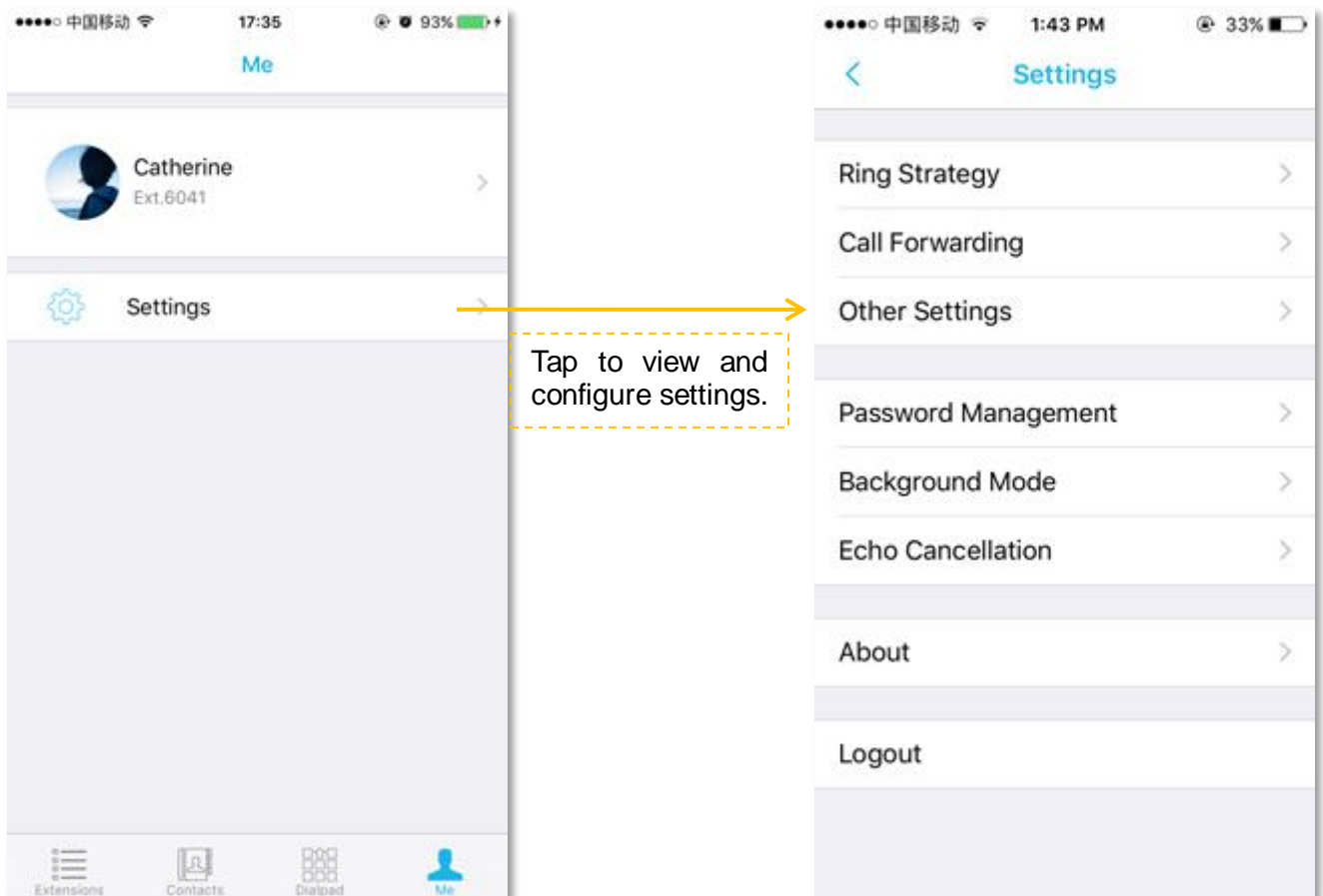
Creating a Contact from History

You can create a contact from a history item.



SETTINGS

For the first time using Linkus, please tap  on the bottom of the screen, and go to configure the Linkus.



1) Ring Strategy

Set the ring strategy for your office phone (where your extension is registered) and Linkus.

- **Ring Simultaneously:** the office phone and Linkus will ring simultaneously.
- **Ring Extension Only:** only the office phone will ring.
- **Ring Linkus Only:** only the Linkus will ring.
- **Ring Extension First:** the office phone rings first, then the Linkus rings.
- **Ring Linkus First:** the Linkus rings first, then the office phone rings.

2) Call Forwarding

Calls can be forwarded in any of these 3 conditions, choose one condition and choose the forward destination.

- **Always:** always forward the call, never rings the user.
- **No Answer:** only call forward when the user does not answer.
- **When Busy:** only call forward when the user is in a call.

3) Other Settings

- **Call Waiting:** if Call Waiting is enabled, Linkus allows an additional call to come if the user is already in a call.
- **DND:** if DND is enabled, the user could not receive any calls.
- **Ring Timeout:** set the ring timeout in seconds, phone will stop ringing after the time defined.

4) Password Management

Change the Linkus login password. Enter the old password first, then enter new password twice to confirm. Tap “Save”, and log in Linkus using the new password.

5) Background Mode

Keep running Linkus in the background to answer calls from Linkus promptly. If enabled, it will increase power consumption.

6) Echo Cancellation

If there is an echo during the call, enable this feature to get better sound quality.

7) About

On the “About” screen, you can see the Linkus version.

8) Logout

Tap “Logout” to quit Linkus entirely. You will not receive calls on Linkus.